

## Attribute blending easier than ever with New Color Cube in VisualVoxAt 6.0 software.

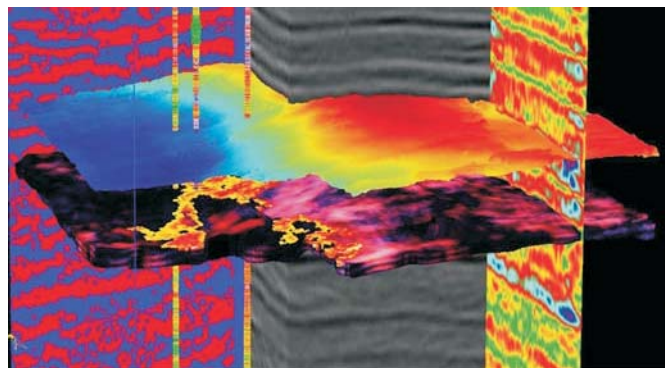
Geomodeling has included a dynamic Color Cube in its feature set of VisualVoxAt software. VisualVoxAt is an integrated, Windows-based toolkit for seismic attribute generation, visualization, calibration, classification and interpretation. The software combines fast rendering technology with easy-to-use analysis tools to reduce cycle times for faster decisions.

The Color Cube blends 3D attributes to allow the deeper understanding of the relationships between multiple attributes. Conventional methods that only examine one attribute at a time delivers only a piece of the information which isn't enough to show the full value of the prospect. By combining multiple attributes in a single correlation display, the user can be more efficient in defining the prospect which can be showcased and understood in a simpler and more accurate manner. Examining multiple attributes at the same time also allows for faster analysis. Users love the simplicity of being able to input any three attributes with fewer clicks into a single cube and render the results faster than other comparable attribute blenders.

By using the Color Cube, geoscientists can improve their efficiency speed and accuracy of visualizing and interpreting attributes. As a plug-in to reservoir interpretation workflows, Geomodeling's VisualVoxAt software is a cost-effective solution for optimizing reservoir assets and increasing well accuracy.

Other new features included in this release are:

- *Synthetics*
- *Velocity Model*
- *Spectral Decomposition (S Transform)*
- *3D Cross Plot (enhancement)*
- *Data Export (enhancement)*
- *2D Section View (enhancement)*



Geomodeling's color cube in VisualVoxAt 6.0

## Upcoming Events

**March 6, 2007**

**13th Annual RMAG-DGS  
3D Seismic Symposium**

Downtown Marriot  
Denver, Colorado

**April 1 - 4, 2007**

**AAPG Annual Convention  
and Exhibition**

Long Beach, California

**April 16 - 18, 2007**

**2007 SPE Rocky Mountain  
Oil and Gas Symposium**

Hyatt Regency Denver at  
Colorado Convention Centre  
Denver, Colorado

**June 11 - 14, 2007**

**69th EAGE Conference  
and Exhibition,**

**Incorporating  
SPE EUROPEC 2007**

London, England

### Availability

Geomodeling's VisualVoxAt software version 6.0 with dynamic Color Cube is available today. Please contact your local Geomodeling office via the Geomodeling website at [www.geomodeling.com](http://www.geomodeling.com) or by email at [info@geomodeling.com](mailto:info@geomodeling.com).

## The Graduates

Congratulations to those who have attended and completed our training courses.

*\* listed by company*

Shell  
Compton Petroleum  
Fairborne Energy  
Encana  
Arcan Resources  
CNRL  
Defiant Resources  
Sensor Geophysical  
Pioneer Natural Resources  
Prairie Schooner Energy  
Apache Corporation  
Sensor Geophysical  
E & B Resources (Arabella Ent)  
Suncor  
Fairborne Energy  
Husky Energy  
Dominion Exploration  
Bill Barrett Corporation



sign up  
today!

## Training Courses

The Geomodeling training courses are geared toward new users and existing users, where these sessions will guide trainees through many relevant topics in VisualVoxAt and SBED software. Through interactive demonstrations and practical exercises, you will learn how to manage, model and visualize data for more accurate readings of your reservoir's potential.

The courses cover such topics ranging from data loading and introductory courses to seismic facies classification, spectral decomposition and modeling and advanced upscaling. We are prepared to work to your needs to deliver the best tips and techniques for using Geomodeling software.

### Upcoming Training Courses - Calgary, Alberta

**January 30**, Tuesday  
Data Loading for VisualVoxAt  
Full day (9:00 am - 4:00 pm)

**February 15**, Thursday  
Intro to VisualVoxAt  
1/2 day (9:00 am - 12 noon)

**February 21**, Wednesday  
Cross-Plotting in VisualVoxAt  
1/2 day (1:00 pm - 4:00 pm)

**February 22**, Thursday  
Advanced Seismic Facies  
Classification  
1/2 day (9:00 am - 12 noon)

**February 22**, Thursday  
Advanced Spectral Decomposition  
1/2 day (1:00 pm - 4:00 pm)

**March 8**, Thursday  
Intro to VisualVoxAt  
Full day (9:00 am - 4:00 pm)

**March 14**, Wednesday  
Cross-Plotting in VisualVoxAt  
1/2 day (1:00 pm - 4:00 pm)

**March 15**, Thursday  
Advanced Seismic Facies  
Classification  
1/2 day (9:00 am - 12:00 noon)

**March 15**, Thursday  
Advanced Spectral Decomposition  
1/2 day (1:00 pm - 4:00 pm)

Please visit our website for detailed course descriptions and to register online. For more information phone (403) 262-9172 or email [info@geomodeling.com](mailto:info@geomodeling.com)

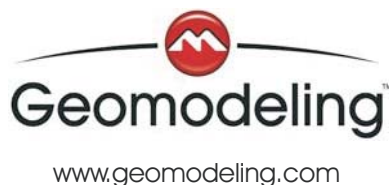
If you are interested in being immediately notified of new training courses via email, please sign up at [www.geomodeling.com/training](http://www.geomodeling.com/training)

### Geomodeling Software Solutions

**SBED** – The only technology for modeling and upscaling the fine-scale sedimentary details that impact large-scale reservoir performance.

**SBEDStudio** – An advanced reservoir modeling, simulation and evaluation software solution that integrates stratigraphic, lithofacies and petrophysical data to build geologically realistic models for reservoir evaluation.

**VisualVoxAt** – This integrated, Windows-based seismic interpretation system enhances reservoir knowledge through integrated neural networking, strata-visualization and quantitative analysis workflows.



## Did you know....

If your horizons don't show up when trying to import them to create a strata-grid in VisualVoxAt, redefine each of the horizons again in the 'Interpretation Manager' to correct the problem.